

Aerize Card Loader 2008

Premium BlackBerry Application

v1.1.0

- **Install and run applications from an SD card**
- **Run games and software only when needed**
 - **Enhance BlackBerry performance**

Get the most out of your BlackBerry device by installing limitless applications from removable media cards; the size of your SD Card is all you have left to worry about. This user-friendly app will install and remove applications on your device from any removable media card.

Requirements:
BlackBerry OS 4.2+

Aerize Card Loader Manual - Revision II

Installation and Registration

It's no secret mobile devices have limited memory; this is very true of BlackBerry devices. Running applications, storing files, and managing the system all use the same memory on BlackBerry devices. Unfortunately this limits the amount of games and applications that can reliably be loaded onto the device at one time. After you have installed Aerize Card Loader, this limit will be forever shattered, allowing you to load applications and games directly from an SD Card.

Installation

It's easy to install Aerize Card Loader, simply run the installer on your personal computer and follow the on screen instructions.

1. Connect your BlackBerry device to your computer
2. Run the Aerize Card Loader EXE
3. Enjoy!

Registration

Aerize Card Loader has a fully functional 7 day trial. When the trial period has ended, you may purchase a Serial Code to enable prolonged usage.

1. Purchase a Serial Code
2. Open the Aerize Card Loader Options
3. Enter your Serial Code

SD Card Configuration

To use Aerize Card Loader effectively, you will need to determine which applications you would like to install on the SD card. You should select applications or games that you use infrequently, or that take too much memory to warrant a full-time installation on the device. When you have selected the applications you would like to have installed to your SD Card, you will need to package them and setup Aerize Card Loader with those installations.

Warning: Settings applied to an application that is installed from your SD card will be removed when you uninstall the application from your device and will not be applied the next time you re-install the same application. We are currently looking for a fix to this, but at this time it is not possible to keep user settings.

Packaging BlackBerry Applications on an SD Card

Aerize Card Loader uses COD files from Desktop or OTA installations; Desktop installations are usually Zip files that include ALX and COD files. OTA installations are installed directly from the device's web browser to the device. Aerize Card Loader does not extract ZIP files; please see [Aerize Explorer](#) for Zip file manipulation and management on your device.

Transfer to an SD Card from an OTA Download

The easiest way to configure the SD Card is by installing OTA (see above). No need to remove the SD Card, un-package desktop installations, or read instruction manuals. Aerize Card Loader will handle all of the technical details whenever you install applications.

1. Select 'Save to SD Card' during an OTA installation
2. Aerize Card Loader will automatically package the application on the SD Card
3. Load and Unload from Aerize Card Loader when finished

Transfer to SD Card from Personal Computer

Not all applications are available OTA, so you can manually copy the COD files from a desktop download and transfer the files to the SD Card. Using the '**Mass Storage Mode**' of the BlackBerry device the SD Card will look like an external drive on a Personal Computer.

NOTE: The SD Card needs to be inserted into the device for this process to work. The BlackBerry device will not be able to read the SD Card while using Mass Storage Mode, disconnect the device to see the new applications on the SD Card.

1. Connect your BlackBerry device to a computer, and enable '**Mass Storage Mode**'
2. Copy all COD files for application to **/SDCard/** or **/SDCard/loader/** folders on the SD Card
3. Load and Unload from Aerize Card Loader when finished

Folder Layout on SD Card

Aerize Card Loader will search for COD files in the **/SDCard/** root and **/SDCard/loader/** folders. A COD file must exist on the SD Card before it can be installed with Aerize Card Loader.

1. **/SDCard/** [or]
2. **/SDCard/loader/**

General Usage

Loading an Application from an SD Card

When you want to load an application onto the BlackBerry device, insert the SD Card with the application, and tell Aerize Card Loader to load the application. If you have not configured an SD Card with applications, please see the previous section.

1. Ensure the Application COD files are on the SD Card
2. Open Aerize Card Loader on the BlackBerry device
3. Choose the desired application, and select the '**Load**' menu option

Removing an Application from the BlackBerry Device

When you want to remove an application to free up space on your device its simple, let Aerize Card Loader handle it for you. Applications installed on the device will not have an SD Card icon, select the application you want to remove and tell Aerize Card Loader to unload it.

Note: Card Loader cannot load and unload applications you have installed directly to your device without going through the Card Loader setup. See section "SD Card Configuration" above.

1. Open Aerize Card Loader on the BlackBerry device
2. Choose the desired application, and select the '**Unload**' menu option
3. You may be prompted to reset your device when the application has been removed

Viewing Information About an SD Application

Applications on the SD card are listed in the main screen of Aerize Card Loader, you can find out useful information about the COD files.

1. Choose the desired application; it should have an SD Card icon
2. Select the '**Info**' menu item

Viewing Information About a Device Application

Applications on the Device are listed in the main screen of Aerize Card Loader, you can find out useful information about the applications. You can see the name, vendor, version, size, additional modules, and more.

1. Choose the desired application; it should not have an SD Card icon
2. Select the '**Info**' menu item

View the Event Log (Note: This is not installed with Card Loader)

Aerize Card Loader logs activities to the BlackBerry Event Log. You can view the event log with Aerize EventLog. You can change the amount of items logged to the BlackBerry Event Log.

1. Download Aerize EventLog
2. Install Aerize EventLog
3. View the BlackBerry System Event Log

Options

Changing Aerize Card Loader Options

You can configure the way Aerize Card Loader works to suit your personal tastes. Depending upon your style, you may prefer to defer all reset prompts until you exit Aerize Card Loader.

1. Select the '**Options**' menu item
2. Change the options
3. Save

Enable OTA Save

You can enable and disable the automatic support for OTA Installation packaging available with Aerize Card Loader by selecting or unselecting this option. When it is unselected, Aerize Card Loader will not package the installer to the SD Card. When this option is enabled it will give the option 'Save to SD Card' on all OTA downloads.

Only Prompt on Exit

Some applications are highly integrated into the BlackBerry operating system and require a reset when loaded or unloaded. If you are working with multiple applications at a time, you can enable this option to only provide a prompt to reset the device when you have finished managing the applications and are exiting Aerize Card Loader.

Show Hidden Applications

Some application are mark as hidden, when this option is enabled you will see applications even if they have been marked as hidden.

Serial Code

To register Aerize Card Loader for full functionality after the trial period has expired, enter the 5-digit numerical code in this field. A serial code can be purchased from the site where the download was acquired. NOTE: Serial codes do NOT have the letters 'O', 'I', 'B' or 'L'

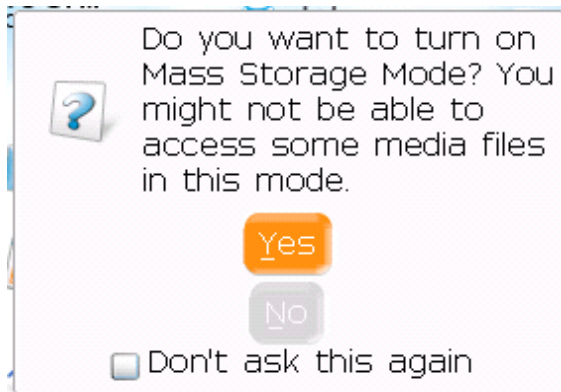
Transfer from PC to SD Card

1. Download Applications to your Computer

Choose the applications you want to be available from the SD card, and download them to your personal computer (NOTE: These will usually be ZIP or EXE files). You will need the COD files from the files you have downloaded.

2. Copy COD Files to the SD Card

a. Place your BlackBerry device into storage mode



b. Navigate to the SD Card. Create a new folder, and name it: Loader

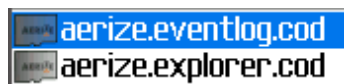


c. Copy all the COD files from each application to the new SD Card folder.

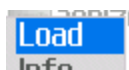
3. Use Aerize Card Loader

a. Disconnect your device from your personal computer. NOTE: The device cannot read the SD Card when it is in Mass Storage Mode

b. The applications with an SD Card icon can be loaded to the device. Select one to load.



b. Select Load from the menu



c. The application is now available on your device.

Common Questions

Q. Why does my device have to be reset when I close the application?

A. Depending upon the application, it may require a device reset. This happens since Aerize Card Loader is actually uninstalling the software from your device. A reset happens if you uninstall software using the BlackBerry Desktop Manager and the same rules apply to Aerize Card Loader. Although you can set how vigilant Aerize Card Loader is with reset prompts in the Options.

Q. Can I move applications installed previously from the device to the SD card?

A. No. Aerize Card Loader is unable to read the code for the currently installed applications on the device. You will need to supply the install files on an SD Card.

Q. What types of installs does Aerize Card Loader accept?

A. Aerize Card Loader can use COD files from desktop installations, or COD files from an OTA based install. If installing from the desktop, you can create a new, unzipped folder, place all the COD files from one application in it, rename it to whatever you want and then move it to the SD card. (See previous section)

Q. What applications work best with Aerize Card Loader?

A. Some applications can be problematic with Aerize Card Loader, if the applications start automatically; it may have a problem with Aerize Card Loader. The best applications are well-behaved applications that do not run in the background and close cleanly. The applications behaviors that are problematic with Aerize Card Loader are:

1. Automatic Start - Interferes with the auto-install functionality of Aerize Card Loader
2. Listeners - Applications that run in the background, waiting on events like email
3. Native - Applications that use native interfaces

Q. How do I put an Application COD onto an SD Card?

A. You may need to use another application to move a COD file to the device, Roxio's Media Manager is included with BlackBerry Desktop Manager and can copy a COD file to the device. Aerize Explorer can copy a COD or Zip file to the SD Card, and unpack it from the Zip file. Many desktop computers and laptops already have built in SD Card slots that you can use to transfer files to the card, or you can use a card reader, if you have one.

Q. How can I upgrade my device software?

A. Follow the steps bellow:

1. Backup your device information
2. Download and Install the latest OS for your device
(http://na.blackberry.com/eng/support/downloads/download_sites.jsp)
3. Upgrade your device using the Application Loader from BlackBerry Desktop Manager

End User License Agreement

Aerize EULA - [Revision I - March 1, 2008]

Aerize hereby grants you a nonexclusive license to:

- i. use one copy of the Software on a single computer or device; and
- ii. make one copy of the Software for archival purposes, or copy the software onto the hard disk of your computer and retain the original for archival purposes.

TITLE:

Aerize remains the owner of all right, title, and interest in the Software and in the documentation that accompanies the Software.

RESTRICTIONS:

The Software and the documentation that accompanies the Software are protected by the United States copyright laws and international treaties. You must treat the Software and its documentation like any other copyrighted material for example, a book. You may not:

- i. copy the documentation that accompanies the Software;
- ii. sublicense, rent or lease any portion of the Software;
- iii. reverse engineer, decompile, disassemble, or make any attempt to discover the source code of the Software;
- iv. copy the Software except to make archival or backup copies as provided above;
- v. modify or adapt the Software or merge it into another program; or
- vi. place the Software on a server so that it is accessible via a public network such as the Internet.

WARRANTY DISCLAIMER:

AERIZE MAKES NO REPRESENTATIONS OR WARRANTIES ABOUT THE SUITABILITY OF THE SOFTWARE FOR ANY PURPOSE. THE SOFTWARE IS PROVIDED "AS IS" WITHOUT EXPRESS OR IMPLIED WARRANTIES, INCLUDING WARRANTIES OF MERCHANTABILITY AND FITNESS FOR A PARTICULAR PURPOSE OR NONINFRINGEMENT. AERIZE SHALL NOT BE LIABLE UNDER ANY THEORY FOR ANY DAMAGES SUFFERED BY YOU OR ANY USER OF THE SOFTWARE. AERIZE MAY AUTHENTICATE THIS LICENSE ELECTRONICALLY. AT ITS OPTION, AERIZE MAY ELECT NOT TO SUPPORT THE SOFTWARE, AND MAY ELECT NOT TO ISSUE UPDATES TO THE SOFTWARE.

DISCLAIMER OF DAMAGES:

REGARDLESS OF WHETHER ANY REMEDY SET FORTH HEREIN FAILS OF ITS ESSENTIAL PURPOSE, IN NO EVENT WILL AERIZE BE LIABLE TO YOU FOR ANY SPECIAL, CONSEQUENTIAL, INDIRECT OR SIMILAR DAMAGES, INCLUDING ANY LOST PROFITS OR LOST DATA ARISING OUT OF THE USE OR INABILITY TO USE THE SOFTWARE EVEN IF AERIZE HAS BEEN ADVISED OF THE POSSIBILITY OF SUCH DAMAGES.

COMPLIANCE WITH APPLICABLE LAWS:

You agree to abide by the copyright law and all other applicable laws of the United States including, but not limited to, export control laws.

TERMINATION:

This license agreement takes effect upon your use of the Software and remains effective until terminated. You may terminate it at any time by destroying all copies of the Software and its documentation in your possession. It will also automatically terminate if you fail to comply with any term or condition of this license agreement. You agree on termination of this license to destroy all copies of the Software and its documentation in your possession.

CONFIDENTIALITY:

The Software contains trade secrets and proprietary know-how that belongs to Aerize and it is being made available to you in strict confidence. ANY USE OR DISCLOSURE OF THE SOFTWARE, OR OF ITS ALGORITHMS, PROTOCOLS, OR INTERFACES, OTHER THAN IN STRICT ACCORDANCE WITH THIS LICENSE AGREEMENT, MAY BE ACTIONABLE AS A VIOLATION OF OUR TRADE SECRET RIGHTS.

GENERAL PROVISIONS:

- i. This license agreement is governed by the laws of the State of Delaware.
- ii. This written license agreement is the exclusive agreement between you and Aerize concerning the Software and its documentation, and supersedes any prior purchase order, communication, advertising, or representation concerning the Software.
- iii. This license agreement may only be modified only by a writing signed by you and Aerize.
- iv. In the event of litigation between you and Aerize concerning the Software or its documentation, the prevailing party in the litigation will be entitled to recover attorney fees and expenses from the other party.

Copyright ©2008 Aerize. All Rights Reserved. <http://aerize.com>